

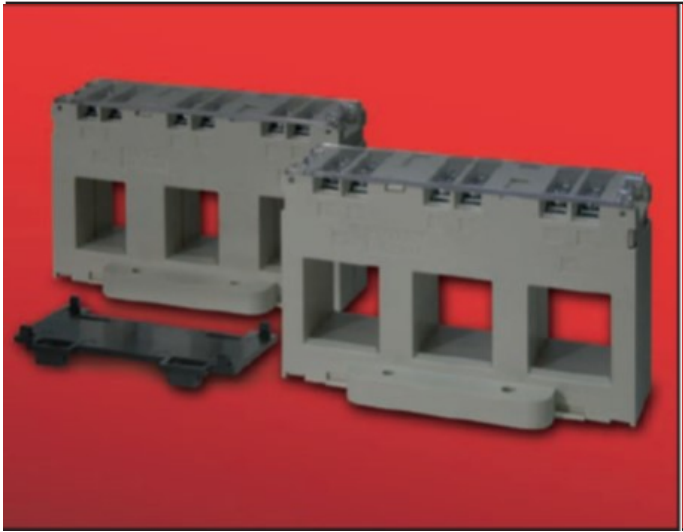
# CT140 SERIES 3 PHASE MOULDED CASE CURRENT TRANSFORMERS

### DESCRIPTION

Miniature three phase current transformers suitable for primary ranges from 250A-630A with RJ12 Connection

### APPLICATION

For installation onto cables or 31mm maximum busbars. The products have an overall width of 140mm allowing installation directly on top of moulded case circuit breakers.



### TECHNICAL SPECIFICATION

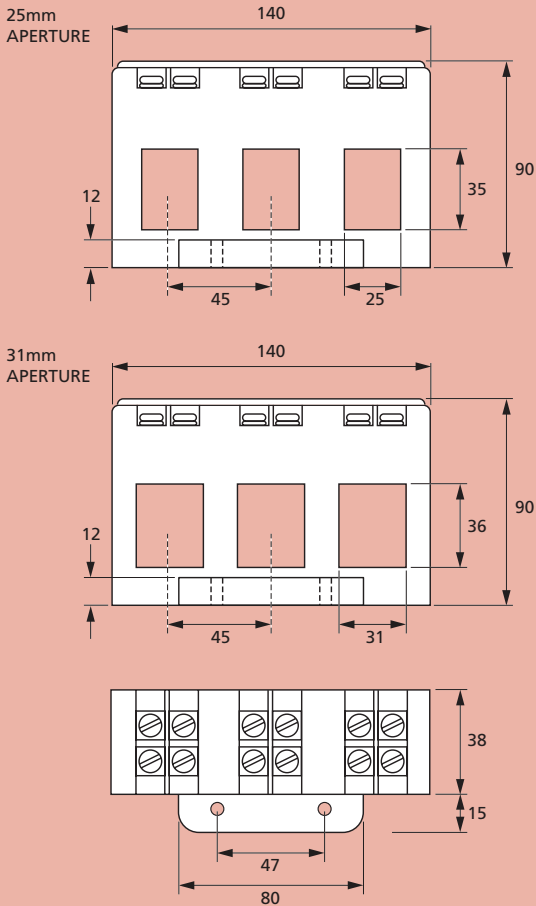
- Conforms to IEC185, BS 7626, BSEN 60044-1 and IEC 60044-1.
- Rated system voltage 0.72/3kV.
- Ambient temperature range -30°C to 80°C.
- Frequency range 50-60Hz.
- Insulation level 3kV for 1 minute.
- Continuous current 1.2 x rated current.

### RANGE

PRIMARY CURRENT	FOOT MOUNTED 31mm APERTURES
250A	CT140RJ12250/0.1-0.5/0.5
300A	CT140RJ12300/0.1-0.5/0.5
400A	CT140RJ12400/0.1-0.5/0.5
500A	CT140RJ12500/0.1-0.5/0.5
600A	CT140RJ12600/0.1-0.5/0.5
630A	CT140RJ12630/0.1-0.5/0.5

All Models are rated at 0.5VA Class 0.5

### DIMENSIONS (mm)



Our policy is one of continuous development and therefore specifications may change without notice.

## HOWARD BUTLER LTD

CROWN WORKS, LINCOLN ROAD  
WALSALL WS1 2EB ENGLAND

Tel: 01922 640003 Fax: 01922 723626

International Tel: +44 1922 640003 E-mail: sales@hobut.co.uk

<http://www.hobut.co.uk>